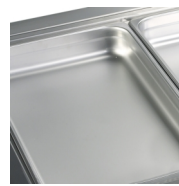


## CW2/V

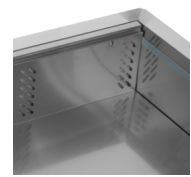
Cooling Well GN1/1

### Product Features

- Stainless steel
- Electronic thermostat
- Accepts GN1/1 pans (Not supplied)
- Ventilated cooling



Designed for GN1/1 pans, not supplied



Ventilated cooling

Design and Material			Measures and Content			Power and Consumption		
Number of dividers	pcs	3	Capacity GN Pans	pcs	2	Energy Consumption	kWh/24h	3.66
Exterior Finish		SS304	Temperature Range	°C	+2 to +8	Energy Consumption	kWh/h	0.15
Interior Finish		SS304	Climate Class		4	Annual Energy Cons.	kWh/year	1336
			Gross / Net Weight	kg	46 / 38	Input Power	W	122
			Gross / Net Volume	l	107 / 64	Voltage / Frequency	V/Hz	220-240/50
						Noise Level	dB(A)	42
			Cooling and Functions			Dimensions		
			Type of Controller		Electronic	Build In Dimension (WxD)	mm	765 x 665
			Type of Cooling		Ventilated	Internal Dimension (WxDxH)	mm	676 x 508 x 186
			Type of Defrost		Automatic	External Dimension (WxDxH)	mm	788 x 688 x 636
			Refrigerant		R290	Packed Dimension (WxDxH)	mm	842 x 760 x 742
			Refrigerant Charge	g	60	40ft Container Load	pcs	132
			Thermometer		Yes			