

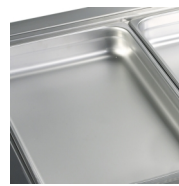
## CW4/V

Cooling Well GN1/1

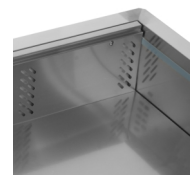


### Product Features

- Stainless steel
- Electronic thermostat
- Accepts GN1/1 pans (Not supplied)
- Ventilated cooling



Designed for GN1/1 pans, not supplied



Ventilated cooling

| Design and Material |     |       | Measures and Content  |     |            | Power and Consumption      |          |                  |
|---------------------|-----|-------|-----------------------|-----|------------|----------------------------|----------|------------------|
| Number of dividers  | pcs | 5     | Capacity GN Pans      | pcs | 4          | Energy Consumption         | kWh/24h  | 4.56             |
| Exterior Finish     |     | SS304 | Temperature Range     | °C  | +2 to +8   | Energy Consumption         | kWh/h    | 0.19             |
| Interior Finish     |     | SS304 | Climate Class         |     | 4          | Annual Energy Cons.        | kWh/year | 1664             |
|                     |     |       | Gross / Net Weight    | kg  | 58 / 46    | Input Power                | W        | 235              |
|                     |     |       | Gross / Net Volume    | l   | 213 / 127  | Voltage / Frequency        | V/Hz     | 220-240/50       |
|                     |     |       |                       |     |            | Noise Level                | dB(A)    | 42               |
|                     |     |       | Cooling and Functions |     |            |                            |          |                  |
|                     |     |       | Type of Controller    |     | Electronic | Dimensions                 |          |                  |
|                     |     |       | Type of Cooling       |     | Ventilated | Build In Dimension (WxD)   | mm       | 1435 x 665       |
|                     |     |       | Type of Defrost       |     | Automatic  | Internal Dimension (WxDxH) | mm       | 1344 x 508 x 186 |
|                     |     |       | Refrigerant           |     | R290       | External Dimension (WxDxH) | mm       | 1456 x 688 x 636 |
|                     |     |       | Refrigerant Charge    | g   | 120        | Packed Dimension (WxDxH)   | mm       | 1510 x 760 x     |
|                     |     |       | Thermometer           |     | Yes        | 40ft Container Load        | pcs      | 69               |