

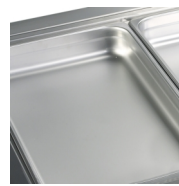
CW5/V

Cooling Well GN1/1

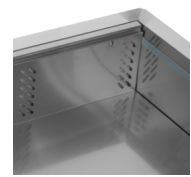


Product Features

- Stainless steel
- Electronic thermostat
- Accepts GN1/1 pans (Not supplied)
- Ventilated cooling



Designed for GN1/1 pans, not supplied



Ventilated cooling

Design and Material			Measures and Content			Power and Consumption		
Number of dividers	pcs	6	Capacity GN Pans	pcs	5	Energy Consumption	kWh/24h	4.56
Exterior Finish		SS304	Temperature Range	°C	+2 to +8	Energy Consumption	kWh/h	0.19
Interior Finish		SS304	Climate Class		4	Annual Energy Cons.	kWh/year	1664
			Gross / Net Weight	kg	64 / 50	Input Power	W	235
			Gross / Net Volume	l	266 / 159	Voltage / Frequency	V/Hz	220-240/50
						Noise Level	dB(A)	42
			Cooling and Functions					
			Type of Controller		Electronic	Dimensions		
			Type of Cooling		Ventilated	Build In Dimension (WxD)	mm	1765 x 665
			Type of Defrost		Automatic	Internal Dimension (WxDxH)	mm	1678 x 508 x 186
			Refrigerant		R290	External Dimension (WxDxH)	mm	1790 x 688 x 636
			Refrigerant Charge	g	130	Packed Dimension (WxDxH)	mm	1678 x 760 x 742
			Thermometer		Yes	40ft Container Load	pcs	57