

## IC200SCE-SO

### Scoop Ice Cream Freezer

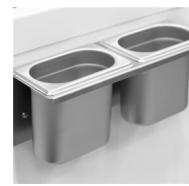


#### Product Features

- Sneeze guard in curved glass
- Angled sliding lids with lock
- Storage under baskets
- Castors with brake
- Powder coated white steel inner liner
- Optional - Scooping baskets for plastic tubs



Scooping basket option



Scoop wash option

### Scoop ice cream freezer - angled and with serveover

The IC-SO range is our price friendly basis chest freezer with a serve over glass top. It is a quality scoop ice cream freezer for a fair price. It is perfect if you wish to add scooping ice cream sales to your business and are on a budget.

This model is the angled version with angled sliding glass lids instead of flat. The lower front of the freezer provides a better display of the content and makes it even more ideal for display of scoop ice cream.

The model is still compact and comes in various sizes, so that it is perfect for both smaller shops and delis with limited space as well as larger shops, gas stations and supermarkets.

It is on wheels and can easily change location in the shop.

It is ideal for branding for better presentation of the cabinet content.

All the different sizes of this range is optimized for baskets that can hold 5 liter plastic tubs in the top and there is room for storage underneath.

Baskets are optional. Type and number must be ordered under accessories.

Design and Material		Measures and Content		Power and Consumption		
SneezeGuard	Yes	Temperature Range	°C	-24 to -14	Energy Class	E
Tempered glass	Yes	Climate Class		4	Energy Consumption	kWh/24h 2.1
Lid No & Type	2 flat angled sliding temp. glass lids	Gross / Net Weight	kg	96 / 89	Annual Energy Cons.	kWh/year 766.5
Basket No & Type	Additional (see drawings)	Gross / Net Volume	l	176 / 157	Input Power	W 98
Castors	4 wheels, 2 with brake	Cooling and Functions		Voltage / Frequency	V/Hz	220-240/50
Exterior Finish	White	Type of Controller		Mechanical	Noise Level	dB(A) 45
Interior Finish	White painted steel	Type of Cooling		Static	Dimensions	
Lock	Yes	Type of Defrost		Manual	Internal Dimension (WxDxH)	mm 500 x 495 x 710
		Refrigerant		R600a	External Dimension (WxDxH)	mm 720 x 615 x 1295
		Refrigerant Charge	g	55		
		Thermometer		Yes		

Power and Consumption		
Packed Dimension (WxDxH)	mm	800 x 750 x 1200
40ft Container Load	pcs	92