

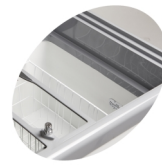
NIC500SC

Ice Cream Freezer



Product Features

- Includes full set of baskets
- Flat sliding glass lids with lock
- Digital thermometer
- Powder coated white steel inner liner
- Castors with brake



White coated steel inner liner



Digital thermometer

Elegant chest freezer with flat sliding glass lids

The NIC-SC range is a compact display chest freezer in an elegant design. It has curved corners, rounded edges and flat sliding glass lids. It is a very stable and solid build, but at the same time on wheels so that it is easy to change location in the shop.

It comes in many sizes, which makes this model perfect for smaller shops and delis with limited space as well as larger shops, gas stations, supermarkets etc.

All sizes are environmental friendly and can be branded for better presentation of the cabinet content.

It is ideal for display of frozen food including ice cream and lollies. Temperature can be held around -14°C for ice cream or around -21°C for other frozen foods.

All sizes have glass lids with a lock for security. They also have a defrost drain for cleaning out the unit.

Design and Material		Measures and Content		Power and Consumption		
Tempered glass	Yes	Temperature Range	°C	-24 to -14	Energy Class	D
Lid No & Type	2 flat sliding temp. glass lids	Climate Class		5	Energy Consumption	kWh/24h 2.45
Basket No & Type	6 Wire baskets, white	Gross / Net Weight	kg	122 / 110	Annual Energy Cons.	kWh/year 894
Max No. of Baskets	pcs 6	Gross / Net Volume	l	478 / 367	Input Power	W 191
Castors	4 wheels, 2 with brake	Cooling and Functions		Voltage / Frequency	V/Hz	220-240/50
Exterior Finish	White	Type of Controller		Mechanical	Noise Level	dB(A) 45
Interior Finish	White painted steel	Type of Cooling		Static	Dimensions	
Lock	Yes	Type of Defrost		Manual	Internal Dimension (WxDxH)	mm 1430 x 510 x 576
		Refrigerant		R290	External Dimension (WxDxH)	mm 1570 x 650 x 885
		Refrigerant Charge	g	110	Packed Dimension (WxDxH)	mm 1640 x 765 x 940
		Thermometer		Yes	40ft Container Load	pcs 42