

IC401SC+SO

Scoop Ice Cream Freezer

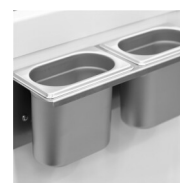


Product Features

- Sneeze guard in curved glass
- Flat sliding glass lids with lock
- Storage under baskets
- Great branding possibilities
- Digital thermometer
- Castors with brake
- Climate class 5 for high performance in warm surroundings
- Optional - Scooping baskets for plastic tubs



Scooping basket option



Scoop wash option

Scoop ice cream freezer with serveover

The IC-SO range is our price friendly basis chest freezer with a serve over glass top. It is a quality scoop ice cream freezer for a fair price. It is perfect if you wish to add scooping ice cream sales to your business and are on a budget.

This model is with flat sliding glass lids with a lock.

The model is still compact and comes in various sizes, so that it is perfect for both smaller shops and delis with limited space as well as larger shops, gas stations and supermarkets.

It is on wheels and can easily change location in the shop.

It is ideal for branding for better presentation of the cabinet content.

All the different sizes of this range is optimized for baskets that can hold 5 liter plastic tubs in the top and there is room for storage underneath.

Baskets are optional. Type and number must be ordered under accessories.

Design and Material		Measures and Content		Power and Consumption	
SneezeGuard	Yes	Temperature Range °C	-24 to -14	Energy Class	D
Tempered glass	Yes	Climate Class	5	Energy Consumption kWh/24h	2.35
Lid No & Type	2 flat sliding temp. glass lids	Gross / Net Weight kg	130 / 120	Annual Energy Cons. kWh/year	857
Basket No & Type	Additional (see drawings)	Gross / Net Volume l	401 / 350	Input Power W	141
Castors	4 wheels, 2 with brake	Cooling and Functions		Voltage / Frequency V/Hz	220-240/50
Exterior Finish	White			Noise Level dB(A)	45
Interior Finish	White painted steel	Type of Controller	Mechanical	Dimensions	
Lock	Yes	Type of Cooling	Static	Internal Dimension (WxDxH) mm	1180 x 510 x 655
		Type of Defrost	Manual	External Dimension (WxDxH) mm	1300 x 630 x 1250
		Refrigerant	R290	Packed Dimension (WxDxH) mm	1400 x 750 x 1130
		Refrigerant Charge g	105		
		Thermometer	Yes		

